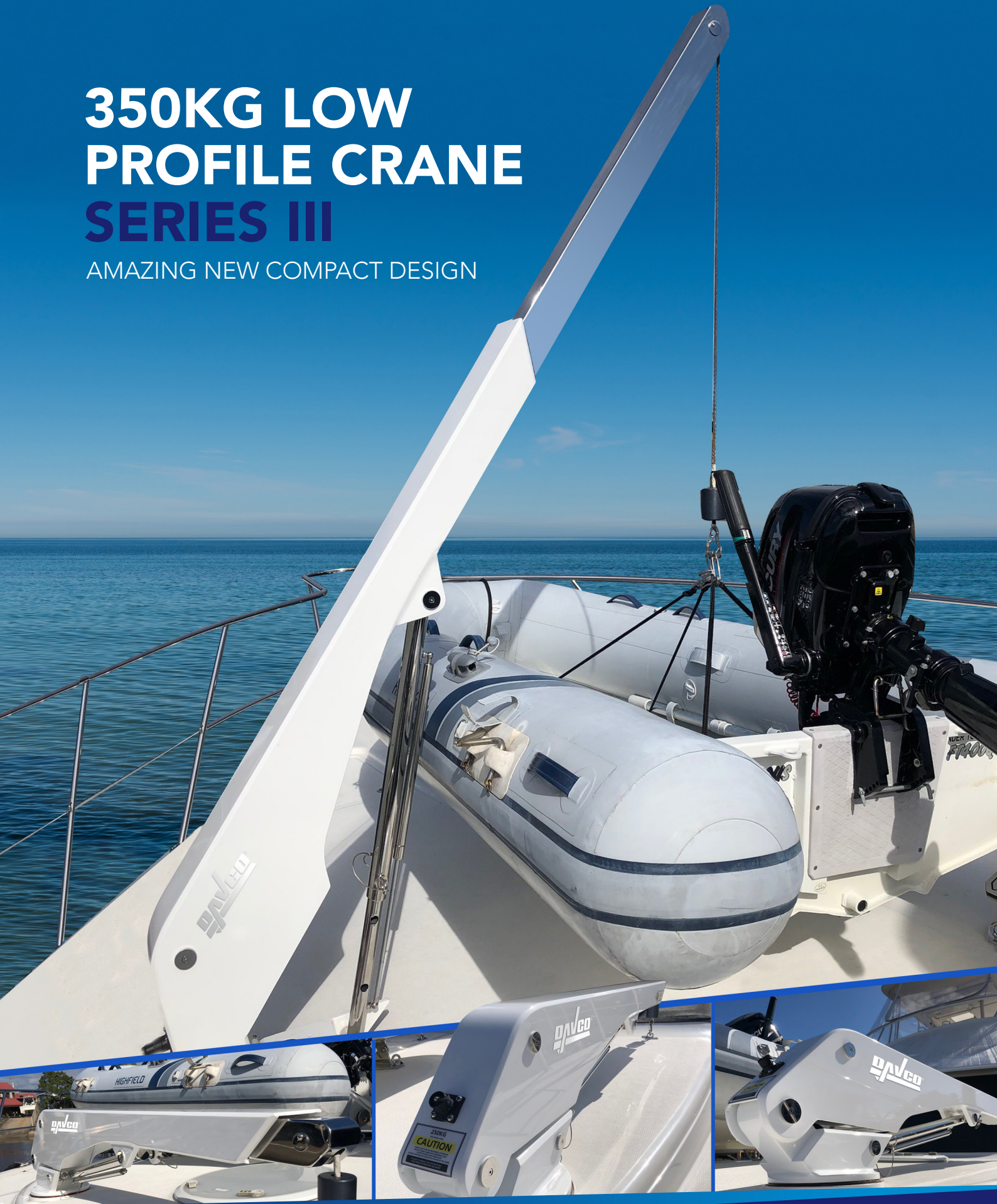


350KG LOW PROFILE CRANE SERIES III

AMAZING NEW COMPACT DESIGN



MAKING LIFE
EASY IN THE LAUNCH AND RETRIEVAL
OF TENDERS AND PERSONAL WATERCRAFT.

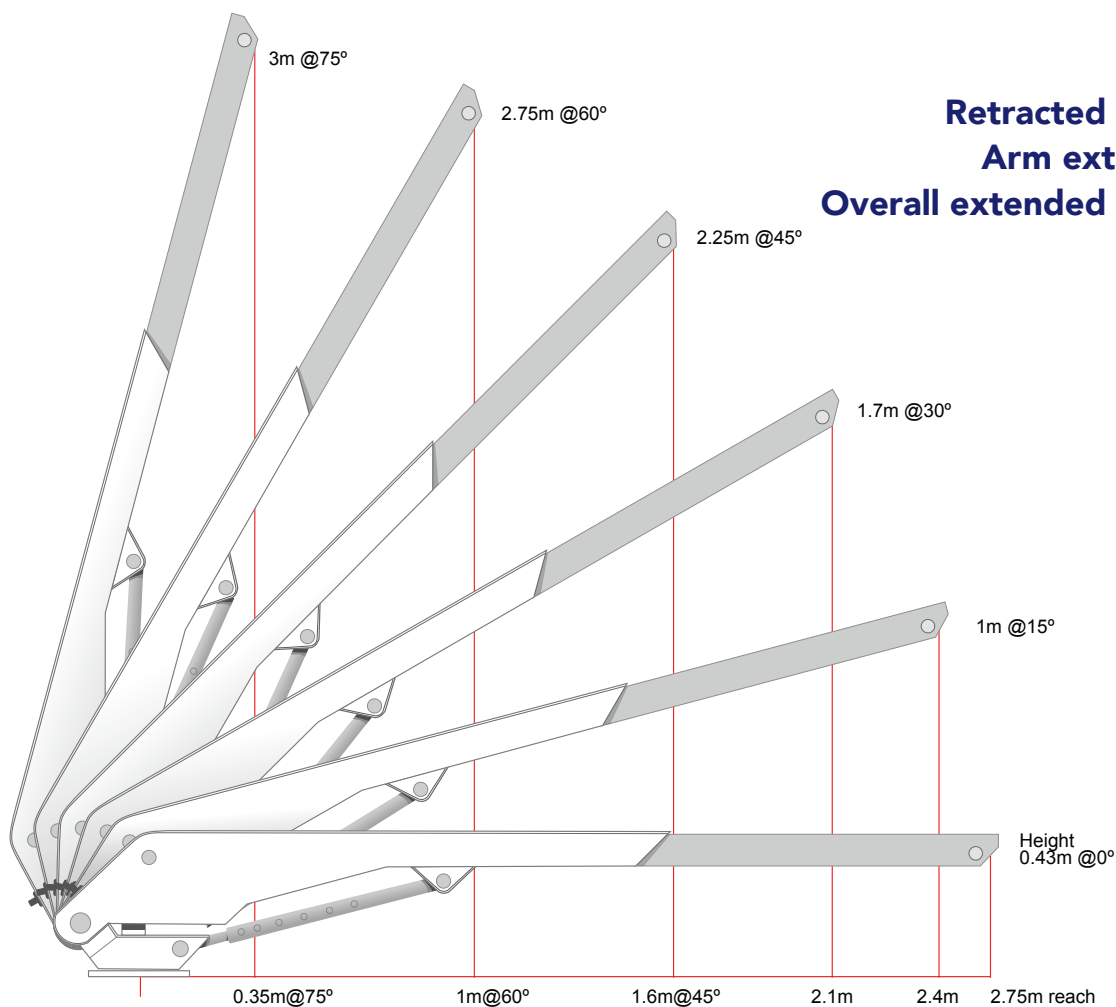
davco®
WINCH SYSTEMS

350KG LOW PROFILE CRANE SERIES III

AMAZING NEW COMPACT DESIGN

Specifications

- Aluminium Primary Construction
- 316 Grade Stainless Steel Pins
- Quiet 3 Stage Planetary Winch
- 12 or 24 Volt
- Supplied Fully Wired
- 10m of Plasma Rope on the drum
- Stainless Steel Sheave
- Remote Control
- Solenoid
- Gas Strut Assisted Jib Up
- Base Plate or Support Post Mounting
- Easy Installation
- Ease of access around the unit



AUSTRALIAN
DESIGNED
& ENGINEERED
SINCE 1984

PPG PAINT SYSTEM

Enquire about our Polished Stainless Steel Cradles
or Removable Tender Chocks to suit your vessel.



Unit 3, 6 John Lund Drive, Hope Island Q Australia 4212
Tel: +617 55 000794 | E: sales@davcowinch.com.au
www.davcowinch.com.au | ABN: 86 066 034 133

[davcowinchsystems](#) [@davcowinchsystems](#)

